



In This Issue:

BERARD
SINCE 1945
The Mega Transport Experts

- > Rebuilding Alexandria | Overpass Replacement Project
- > Powering Acadiana | Transformer Transport & Install
- > Team Member Spotlight | Holly Bohle

Rebuilding Alexandria Overpass Replacement Project



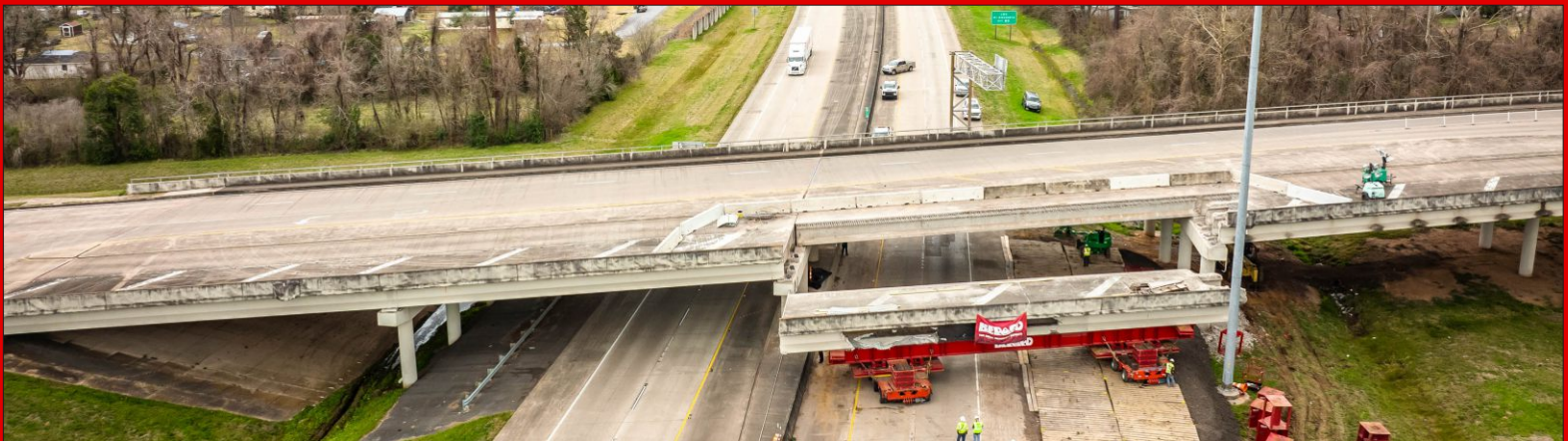
Job Specs

Weight: 430,000 lbs.

Dimensions:
100'L x 18'W x 8'H

Equipment Used: 12 axle lines of Goldhofer PST-SLE transporters, climbing jacks, unified jacking system, bridge girder beams cribbing, stands, steel plate, and assist equipment

After a vehicle impact to an overpass crossing Interstate 49 in Alexandria, LA, a Louisiana construction company and Louisiana DOTD determined the best method to repair the damaged section would be using the Accelerated Bridge Construction method. Berard got the call to replace the 215 ton, 100 foot long bridge section. The fabrication site for the new overpass section was only 1/3 mile away but required travel beneath 2 overpasses, including the one being repaired, and the roadway could only be closed for a maximum of 56 hours. Berard derived a plan using 12 axle lines of Goldhofer PST-SLE transporters and (10) climbing jacks controlled by a unified jacking system. The old span was lifted from the supports, transported to a clear area, then jacked down to a total transport height of 17 feet. The span was moved to the construction area and offloaded, then the new span loaded for installation. The new span was moved to the jacking area, jacked up to the final height, and installed with the precision of the Goldhofer transporters. In 25 total working hours the interstate was reopened to traffic.







Powering Acadiana Transformer Transport & Install



Job Specs

Weight: 340,000 lbs.

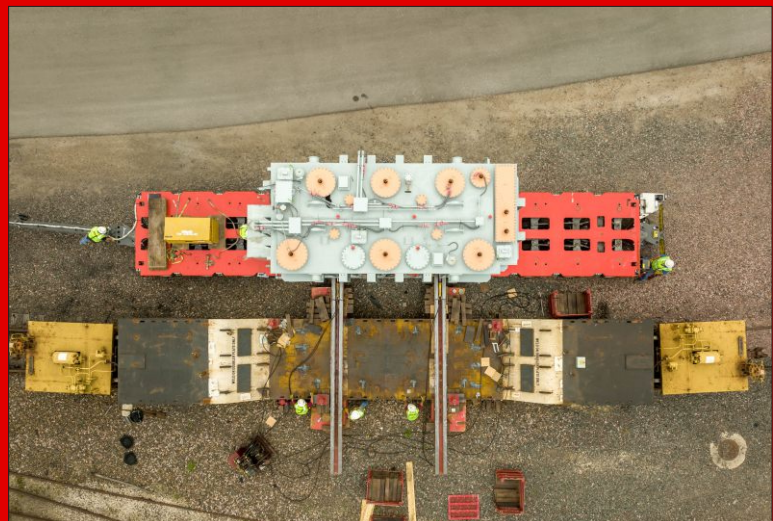
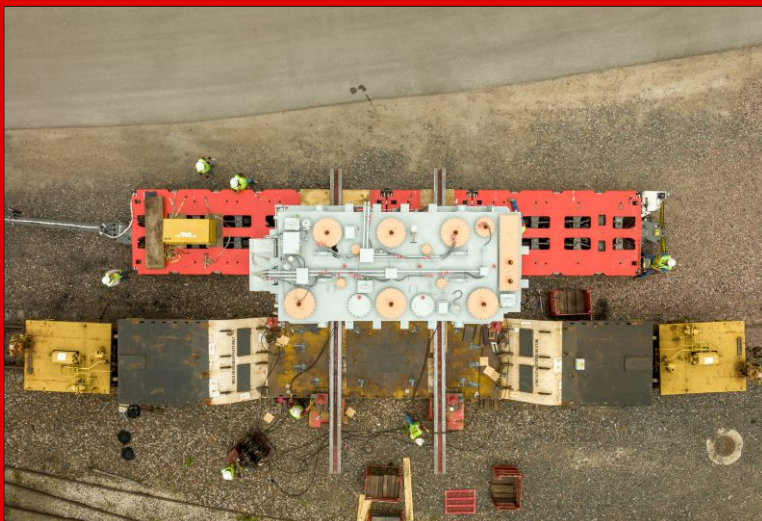
Dimensions:

27'L x 12' W x 22'H

Equipment Used:

12 axle lines of ModulMAX platform trailers, KW C500 prime mover, 300 ton skid system, unified jacking system, custom turntable system, steel plating, cribbing and assist equipment

The Berard team accepted the challenge of delivering a 340,000 lb. electrical transformer to a south Louisiana utility substation near Lafayette, LA. With the nearest rail spur 15 miles away, Berard engineers determined a suitable route capable of handling the load on 12 axle lines of Faymonville ModulMAX platform trailers. The congested destination substation was no issue for the team to navigate despite the muddy conditions. A Hydra-Slide 300 ton skid system and Berard fabricated turntable were used to position the transformer in its final operating position. The complete railcar to pad shipment lasted 3 days.





> Team Member Spotlight

Holly Bohle

Administrative Assistant



Holly Bohle joined the team in November of 2019 and serves on our administration team in our Houston, Texas location. She does a great job handling all office duties and is a big help with permitting.

“I like the challenge of heavy haul permitting. Our team is wonderful to work with and a great place to work” says Holly.

Her hobbies include taking care of her flowers, baking and traveling.



> Birthdays @ Berard

Happy Birthday!

Happy Birthday to These Dedicated Team Members!

Dylan Albert
Alec Freyou